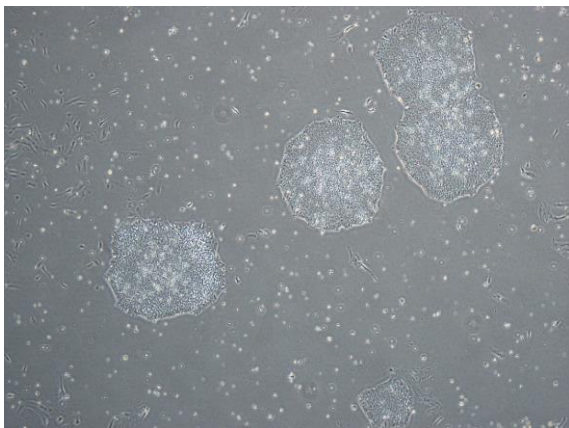
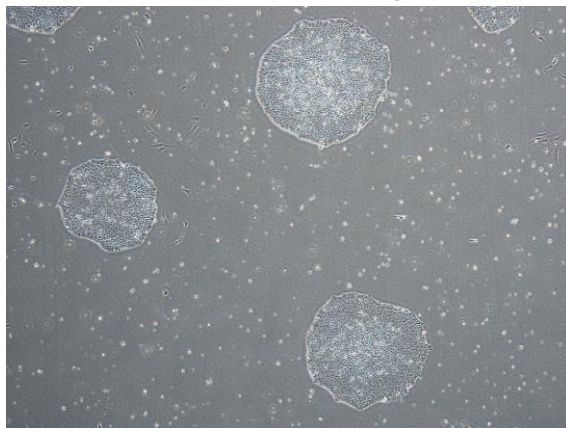


【 CiRA-j-1082 】 Morphology of iPSC colonies

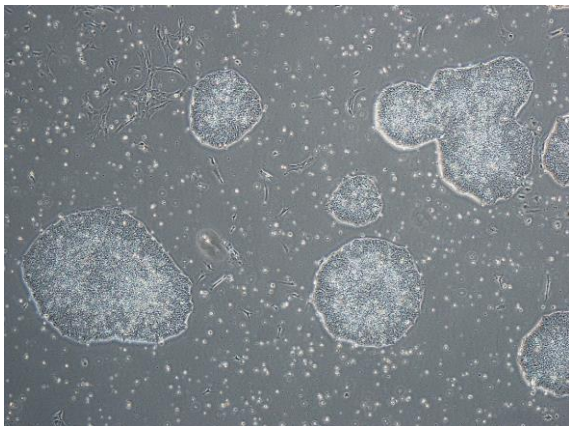
CiRA-j-1082-A: passage-2



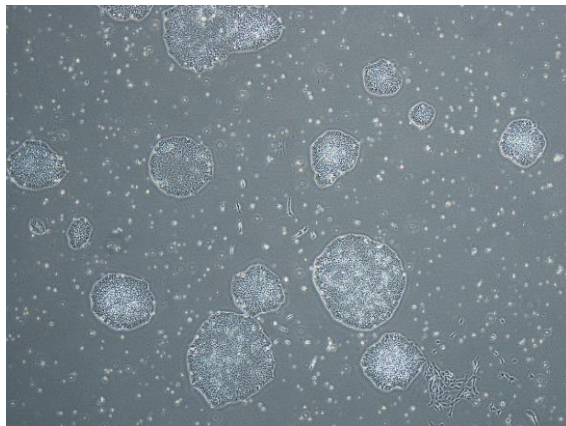
CiRA-j-1082-B: passage-2



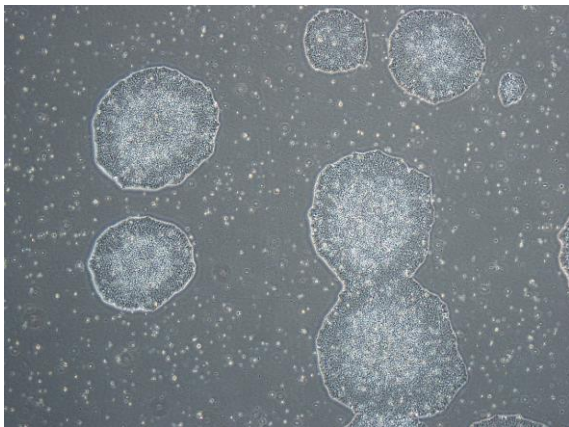
CiRA-j-1082-C: passage-2



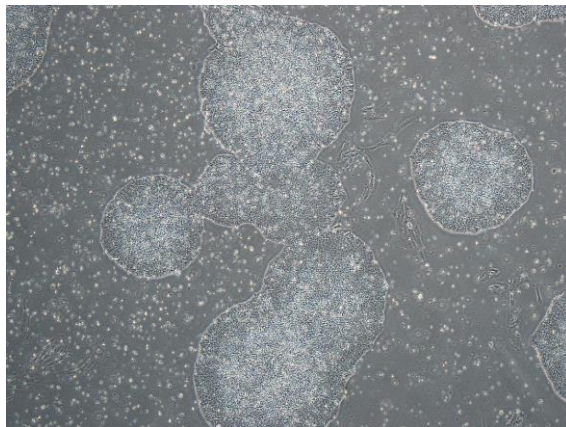
CiRA-j-1082-D: passage-2



CiRA-j-1082-E: passage-2



CiRA-j-1082-F: passage-2



(All images were captured at 4x magnification)